

# pcc



## **Making Wiltshire Safer - Wiltshire and Swindon Police and Crime Plan 2022-2025**

## Foreword from the Police and Crime Commissioner

Embed://<iframe width="560" height="315"  
src="https://www.youtube.com/embed/7YuSxeKMX8w?controls=0" title="YouTube video player"  
frameborder="0" allow="accelerometer; autoplay; clipboard-write; encrypted-media; gyroscope;  
picture-in-picture" allowfullscreen></iframe>

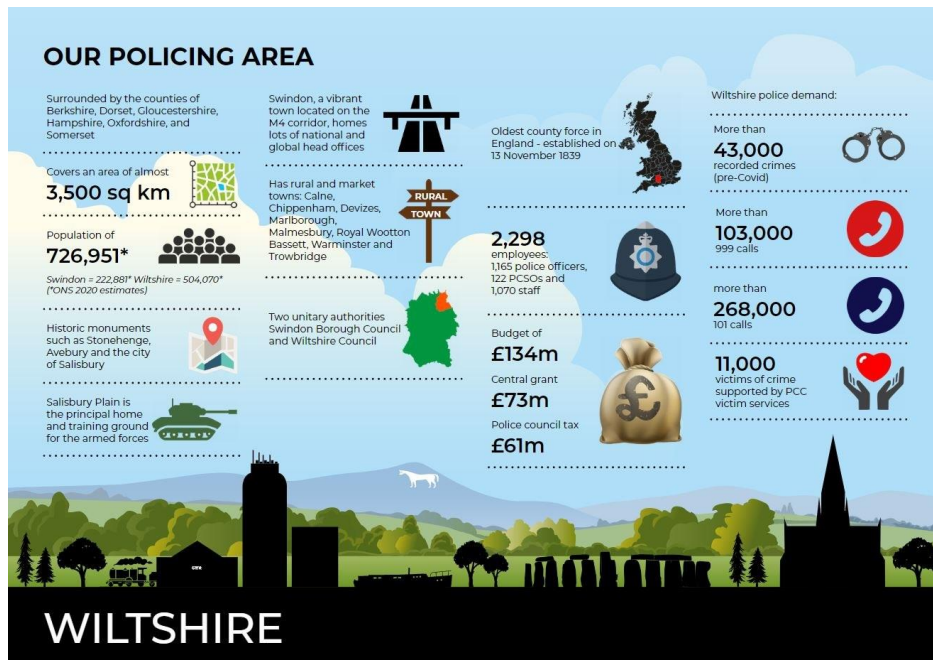
As we begin to adjust and adapt to a post Covid-19 world and develop a new Police and Crime Plan for Wiltshire and Swindon, now is the time to go back-to-basics and ensure that we are focused on delivering exactly what our residents want. Namely to safeguard them from harm, prevent crime, support victims, bring offenders to justice, and to break the cycle of offending to prevent further victims.

My mission is to make Wiltshire a safer place to live, work and visit, and I want the goal of Wiltshire Police to be that: 'One crime is one crime too many.' And my goal for the Office of the PCC is: 'One victim is one victim too many.'

**Philip Wilkinson - OBE**

**Police and Crime Commissioner for Wiltshire and Swindon**

## Our Policing Area



## How I will deliver this plan

A PCC or a police force could not deliver this plan alone. Protecting our communities is not just a policing and criminal justice response but requires a partnership approach across our communities to keep us

safe, prevent crime and bring offenders to justice. Working in partnership across our communities is at the core of how I will deliver my role of PCC. I am working with residents, the voluntary sector, businesses, elected officials, and other public sector organisations to deliver this plan. This includes the formal partnership forums that are key to supporting the objectives in my plan.

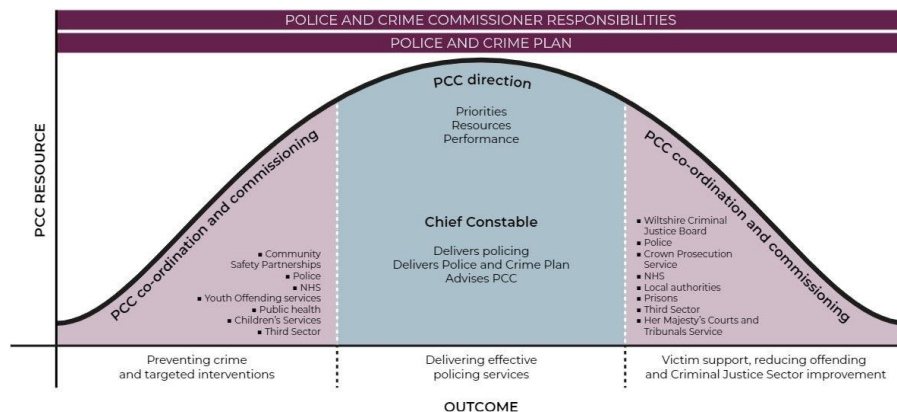
**KEEPING WILTSHIRE SAFER**



**PCC Office and Wiltshire Police focus across the community, safety, policing and criminal justice sectors**

I will continually review, and assess, the performance of my duties and that of my office, as defined by legislation and based upon what you have told me, and I will continue to ask for you for feedback.

The graphic below illustrates conceptually how the functions of partners overlap and need coordination, and how I will work with the Chief Constable and partners to deliver this plan.



## Priority 1 - A police service that meets the needs of its communities

I am prioritising

- **Increasing public confidence, trust, and policing engagement with communities**
- **Increasing the quality of police services provided to all our communities**
- **Giving the Police the right tools for the job**

Embed://<iframe width="560" height="315"  
src="https://www.youtube.com/embed/GwGIS6\_HTxM?controls=0" title="YouTube video player"  
frameborder="0" allow="accelerometer; autoplay; clipboard-write; encrypted-media; gyroscope;  
picture-in-picture" allowfullscreen></iframe>

Embed://<iframe  
src="https://www.facebook.com/plugins/video.php?height=314&href=https%3A%2F%2Fwww.facebook.com%2FWiltshireandSwindonPCC%2Fvideos%2F919290838675176%2F&show\_text=false&width=560&t=0" width="540" height="300" style="border:none;overflow:hidden" scrolling="no" frameborder="0" allowfullscreen="true" allow="autoplay; clipboard-write; encrypted-media; picture-in-picture; web-share" allowFullScreen="true"></iframe>

Embed://<iframe width="540" height="320" src="https://www.youtube.com/embed/8HiUgFjd\_bk" title="YouTube video player" frameborder="0" allow="accelerometer; autoplay; clipboard-write; encrypted-media; gyroscope; picture-in-picture" allowfullscreen></iframe>

Embed://<iframe  
src="https://www.facebook.com/plugins/video.php?height=314&href=https%3A%2F%2Fbusiness.facebook.com%2FWiltshireandSwindonPCC%2Fvideos%2F322351022861219%2F&show\_text=false&width=560&t=0" width="560" height="314" style="border:none;overflow:hidden" scrolling="no" frameborder="0" allowfullscreen="true" allow="autoplay; clipboard-write; encrypted-media; picture-in-picture; web-share" allowFullScreen="true"></iframe>

## Priority 2 - Reduce violence and serious harm

I am prioritising reducing

- **Violence and domestic abuse**
- **Violence against women and girls**
- **Child Abuse and Child Exploitation**
- **County Lines and Serious Organised Crime and Exploitation**

Embed://<iframe width="560" height="315"  
src="https://www.youtube.com/embed/sspWUUa9Zvs?controls=0" title="YouTube video player"  
frameborder="0" allow="accelerometer; autoplay; clipboard-write; encrypted-media; gyroscope;  
picture-in-picture" allowfullscreen></iframe>

Embed://<iframe width="560" height="315" src="https://www.youtube.com/embed/5v\_lbHY44vU" title="YouTube video player" frameborder="0" allow="accelerometer; autoplay; clipboard-write; encrypted-media; gyroscope; picture-in-picture" allowfullscreen></iframe>

Embed://<iframe width="560" height="400" src="https://www.youtube.com/embed/VoGel-21frg" title="YouTube video player" frameborder="0" allow="accelerometer; autoplay; clipboard-write; encrypted-media; gyroscope; picture-in-picture" allowfullscreen></iframe>

Embed://<iframe width="400" height="315" src="https://www.youtube.com/embed/Lc8yu19-3vc" title="YouTube video player" frameborder="0" allow="accelerometer; autoplay; clipboard-write; encrypted-media; gyroscope; picture-in-picture" allowfullscreen></iframe>

Embed://<iframe src="https://www.facebook.com/plugins/video.php?height=314&href=https%3A%2F%2Fbusiness.facebook.com%2FWiltshireandSwindonPCC%2Fvideos%2F912855679355167%2F&show\_text=false&width=560&t=0" width="560" height="314" style="border:none;overflow:hidden" scrolling="no" frameborder="0" allowfullscreen="true" allow="autoplay; clipboard-write; encrypted-media; picture-in-picture; web-share" allowFullScreen="true"></iframe>

### Priority 3 - Tackle crimes that matters to local communities

I am prioritising

- **Anti-social behaviour**
- **Road safety**
- **Rural crime and heritage crime**
- **Fraud, cyber crime and hate crime**

Embed://<iframe width="560" height="315" src="https://www.youtube.com/embed/pRJ8qP1Fw1g?controls=0" title="YouTube video player" frameborder="0" allow="accelerometer; autoplay; clipboard-write; encrypted-media; gyroscope; picture-in-picture" allowfullscreen></iframe>

Embed://<iframe src="https://www.facebook.com/plugins/video.php?height=476&href=https%3A%2F%2Fwww.facebook.com%2FWiltshireandSwindonPCC%2Fvideos%2F1394432934307748%2F&show\_text=false&width=500&t=0" width="510" height="476" style="border:none;overflow:hidden" scrolling="no" frameborder="0" allowfullscreen="true" allow="autoplay; clipboard-write; encrypted-media; picture-in-picture; web-share" allowFullScreen="true"></iframe>

Embed://<iframe src="https://www.facebook.com/plugins/video.php?height=469&href=https%3A%2F%2Fbusiness.facebook.com%2Fphilwilkinsonpcc%2Fvideos%2F417856456500170%2F&show\_text=false&width=500&t=0" width="500" height="476" style="border:none;overflow:hidden" scrolling="no" frameborder="0" allowfullscreen="true" allow="autoplay; clipboard-write; encrypted-media; picture-in-picture; web-share" allowFullScreen="true"></iframe>

allowfullscreen="true" allow="autoplay; clipboard-write; encrypted-media; picture-in-picture; web-share" allowFullScreen="true"></iframe>

Embed://<iframe width="560" height="315"  
src="https://www.youtube.com/embed/OHsJCATMxw0?controls=0" title="YouTube video player"  
frameborder="0" allow="accelerometer; autoplay; clipboard-write; encrypted-media; gyroscope;  
picture-in-picture" allowfullscreen></iframe>

Embed://<iframe  
src="https://www.facebook.com/plugins/video.php?height=308&href=https%3A%2F%2Fbusiness.facebook.com%2FWiltshireandSwindonPCC%2Fvideos%2F592155505536223%2F&show\_text=false&width=560&t=0" width="560" height="308" style="border:none;overflow:hidden" scrolling="no" frameborder="0"  
allowfullscreen="true" allow="autoplay; clipboard-write; encrypted-media; picture-in-picture; web-share" allowFullScreen="true"></iframe>

## Priority 4- Improve the experience of victims and deliver justice

I am prioritising

- **Victim care and support**
- **Mental health**
- **The Criminal Justice System**
- **Restorative Wiltshire**
- **Reducing Reoffending**

Embed://<iframe width="560" height="315"  
src="https://www.youtube.com/embed/J\_aAIW33oUU?controls=0" title="YouTube video player"  
frameborder="0" allow="accelerometer; autoplay; clipboard-write; encrypted-media; gyroscope;  
picture-in-picture" allowfullscreen></iframe>

Embed://<iframe  
src="https://www.facebook.com/plugins/video.php?height=314&href=https%3A%2F%2Fwww.facebook.com%2FWiltshireandSwindonPCC%2Fvideos%2F3053231794919768%2F&show\_text=false&width=560&t=0" width="560" height="314" style="border:none;overflow:hidden" scrolling="no" frameborder="0"  
allowfullscreen="true" allow="autoplay; clipboard-write; encrypted-media; picture-in-picture; web-share" allowFullScreen="true"></iframe>

Embed://<iframe  
src="https://www.facebook.com/plugins/video.php?height=314&href=https%3A%2F%2Fwww.facebook.com%2FWiltshireandSwindonPCC%2Fvideos%2F1561581907547374%2F&show\_text=false&width=560&t=0" width="560" height="314" style="border:none;overflow:hidden" scrolling="no" frameborder="0"  
allowfullscreen="true" allow="autoplay; clipboard-write; encrypted-media; picture-in-picture; web-share" allowFullScreen="true"></iframe>

Embed://<iframe  
src="https://www.facebook.com/plugins/post.php?href=https%3A%2F%2Fwww.facebook.com%2FWilts  
hireandSwindonPCC%2Fposts%2F7067166396689481&show\_text=false&width=560" width="560"  
height="314" style="border:none;overflow:hidden" scrolling="no" frameborder="0"  
allowfullscreen="true" allow="autoplay; clipboard-write; encrypted-media; picture-in-picture; web-  
share"></iframe>

## Roles and responsibilities

The respective roles in policing are determined by Acts of Parliament and the policing protocol, which sets a legislative framework for the PCC and Chief Constable to work together.

POLICE AND CRIME COMMISSIONER	
<ul style="list-style-type: none"> <li>Responsibility for the totality of policing in their area and ensuring the police force is effective and efficient</li> <li>Elected by the public to represent their views on policing and crime</li> <li>Publishes the Police and Crime Plan which sets the strategic direction, after consulting with local people</li> <li>Sets the police budget and decides how much people will</li> </ul>	<ul style="list-style-type: none"> <li>pay towards policing from their council tax, as well as priorities for resources, linked to their plan</li> <li>Appoints and dismisses the Chief Constable</li> <li>Holds the Chief Constable to account for delivering an effective and efficient police service</li> <li>Responsible for local victim support services and funding crime prevention services to help</li> </ul>
<ul style="list-style-type: none"> <li>keep communities safe</li> <li>Coordinating the criminal justice system to reduce crime and improve services</li> <li>Responsible for fulfilling all statutory and legal obligations of the office of Police and Crime Commissioner</li> <li>Create an Executive Leadership Group consisting of the executive leadership teams of both the OPCC and Police</li> </ul>	<ul style="list-style-type: none"> <li>that will meet monthly in order to manage the delivery of the plan against identified measurements of success, which will report decisions to the Police and Crime Panel and the public, such that they can hold the PCC accountable.</li> </ul>
POLICE AND CRIME PANEL	CHIEF CONSTABLE
<ul style="list-style-type: none"> <li>Supports and challenges the Police and Crime Commissioner</li> <li>Has the power to request reports and call the Commissioner to attend its meetings</li> <li>Reviews the Police and Crime Plan and annual report</li> <li>Scrutinises (with an option to veto) the Commissioner's proposed council tax precept for policing</li> <li>Confirms the proposed appointments of Chief Constable and OPCC statutory officers</li> <li>Scrutinises the actions and decisions of the Commissioner</li> <li>Considers complaints of a non-criminal nature against the Commissioner</li> </ul>	<ul style="list-style-type: none"> <li>Leads Wiltshire Police, responsible for the delivery of effective and efficient policing services</li> <li>Responsible for maintaining law and order</li> <li>Accountable to the PCC for delivering the Police and Crime Plan, the Force Performance and</li> <li>Operationally independent on day-to-day policing of the force. With total discretion whether to use police officers and staff and where to conduct investigations</li> <li>Responsible for the conduct and work of their officers and staff, and reallocating them to meet immediate demands</li> <li>Helps development of regional and national policing</li> <li>Responsible for fulfilling all statutory and legal obligations of the office of Chief Constable</li> </ul>

## Local Co-operation, Collaboration and Working Together

### Community Safety Partnerships

There are two Community Safety Partnerships (CSPs) for Swindon and Wiltshire. These partnerships bring together Local Authorities, the Police, the OPCC, the Probation service and others to increase community resilience, reduce vulnerability and exploitation of people and to tackle crime.

[Wiltshire Community Safety Plan \(2019-2022\)](#)

[www.swindon-csp.org.uk](http://www.swindon-csp.org.uk)

### Safeguarding partnerships

Safeguarding Vulnerable People Partnership brings together public organisations who lead services to safeguard children, young people and adults.

[www.wiltshirescb.org.uk](http://www.wiltshirescb.org.uk)

### Wiltshire Criminal Justice Board

I chair the Wiltshire Criminal Justice Board (WCJB) and work with my other Justice Board chairs, the PCCs of Dorset and Hampshire to deliver a fair, timely and high-quality justice system.

[www.wiltshire-pcc.gov.uk/my-office/wiltshire-criminal-justice-board-board/](http://www.wiltshire-pcc.gov.uk/my-office/wiltshire-criminal-justice-board-board/)



1 - [Wiltshire Community Safety Plan 2019 - 2022](#)



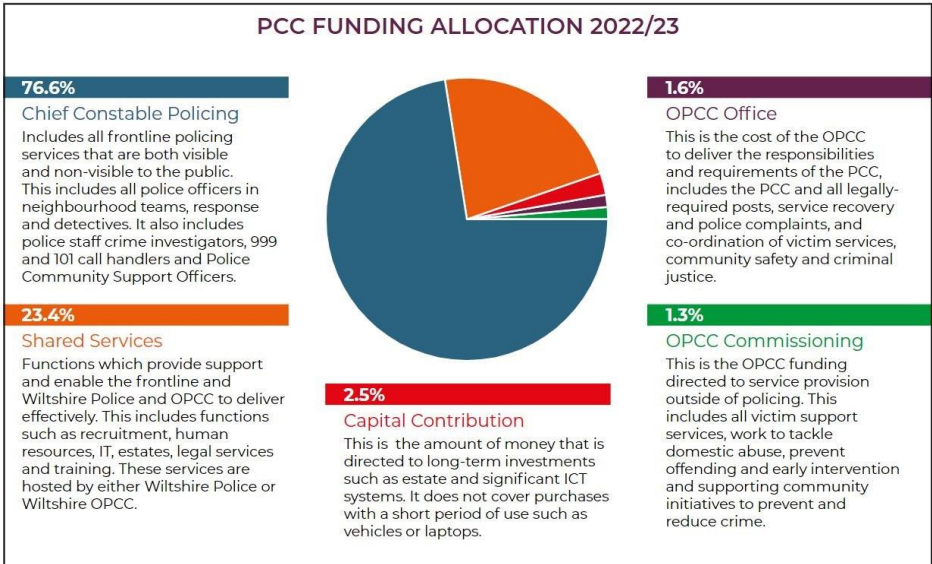
## PCC Policing Budget 2022-23

On 3 February 2022, the Wiltshire and Swindon Police and Crime Panel supported my budget proposals for 2022/23 and my Medium-Term Financial Strategy. This provides an overall budget of £141.5m for me to secure an effective and efficient policing service and deliver this Police and Crime Plan.

This video and graph explains more.

Embed:</><iframe width="560" height="315" src="https://www.youtube.com/embed/0BSTR5qMIwQ" title="YouTube video player" frameborder="0" allow="accelerometer; autoplay; clipboard-write; encrypted-media; gyroscope; picture-in-picture" allowfullscreen></iframe>





## Your Police and Crime Commissioner - in your community



2 - PCC Philip Wilkinson was invited by Junab Ali and Abdul Amin to meet people living in Walcot, Swindon to talk about crime in the area. February 2022.



3 - Highworth Community Speedwatch Group. February 2022.



*4 - PCC Philip Wilkinson and Deputy PCC Russell Holland were delighted to attend the 50th anniversary celebrations which marked the formation of modern Bangladesh. December 2021*



5 - PCC Philip Wilkinson meeting two colonels from the [Royal Canadian Air Force](#) when marking the unveiling of a plaque in Swindon dedicated to Sgt Norman Barbeau. December 2021.



*6 - PCC Philip Wilkinson visiting Erlestoke Prison for the first time and it was a real eye-opener. November 2021.*



*7 - PCC Philip Wilkinson witnessed 15 Police Community Support Officers (PCSOs) receive their powers before they joined their respective community policing teams in October 2021*



8 - Deputy PCC Russell Holland was honoured to join [Swindon Police](#) for the Imran Khan Cancer Appeal Charity Event at the Al-Habib Islamic Centre. November 2021



9 - Spending the afternoon with Swindon Domestic Abuse Support Service who are doing some wonderful work supporting the victims of domestic abuse. October 2021.



10 - PCC Philip Wilkinson has announced increased funding to recruit additional enforcement officers alongside extra cameras in a bid to tackle persistent speeding issues. September 2021.





11 - PCC Philip Wilkinson with [Wiltshire Police](#)'s DS Greg Fergusson and the rural crime team, on Salisbury Plain, alongside Deputy Chief Constable Paul Mills. September 2021.



12 - With the Youth Commission



*13 - With the rural crime team*



*14 - Engaging with the local people, via the media*



15 - [Wiltshire PCC welcomes new powers to tackle scourge of hare coursers \(wiltshire-pcc.gov.uk\)](http://wiltshire-pcc.gov.uk)



*16 - With Swindon PCO and Para Athlete, Corie Mapp*



*17 - With residents from the Parks and Walcot, Swindon*



*18 - Spending time in the Wiltshire Police's Crime and Communications Centre*





*19 - Meeting with Dorset Police and Crime Commissioner and with senior officers from Wiltshire Police and Dorset Police to share intelligence and focus on high-harm offences , like county lines. February 2022.*



*20 - Learning about how pupils at Icknield school have benefited from 'Get Out Get Active' sessions given by The Armed Forces Equine Charity. February 2022.*



21 - Visiting charity Kennet Furniture Refurbiz in September 2021

Working together to make Wiltshire safer

Wiltshire and Swindon

pcc



## Read more and accessibility



22 - [Download full PDF.](#)



23 - [A more accessible online version.](#)

[A plain text version.](#)

To keep up to date with how my office and I are delivering this plan, please follow our social media channels

**facebook.**<sup>®</sup>

24 - [@WiltshireandSwindonPCC](#)



25 - [@OPCCWiltSwindon](#)



26 - [@WiltshireandSwindonPCC](#)



27 - [office-of-the-police-and-crime-commissioner-for-wiltshire-and-swindon](#)



28 - [Police and Crime Commissioner for Wiltshire and Swindon - YouTube](#)



29 - [Philip Wilkinson: PCC Wiltshire and Swindon | Facebook](#)



30 - [Philip Wilkinson: PCC Wiltshire and Swindon \(@pwilkinson\\_pcc\) / Twitter](#)

Office of the Police and Crime Commissioner  
for Wiltshire and Swindon  
London Road, Devizes,  
Wiltshire SN10 2DN

**T** 01225 256926  
**E** [pcc@wiltshire.police.uk](mailto:pcc@wiltshire.police.uk)  
**W** [www.wiltshire-pcc.gov.uk](http://www.wiltshire-pcc.gov.uk)